

For Isotropic Measurement of Magnetic and Electric Fields

- ▲ Evaluation of Field Exposure compared to Major Standards and Guidance (selectable)
- ▲ Shaped Time Domain (STD) – an innovative technique for signal-shape-independent field measurements
- ▲ Fast Fourier Transform (FFT) Spectral Analysis
- ▲ Peak Value Measurement with Proper Phase
- ▲ Large-Capacity Data Storage
- ▲ Remote Control
- ▲ Frequency Range 5 Hz to 32 kHz



APPLICATIONS

The EFA-200 and the EFA-300 are the ideal field analyzers for measuring magnetic and electric fields in the workplace and in public spaces. Both models are designed for professional users in the power industry, at municipal utilities, by insurers, and for health and safety professionals in industry. In the new low frequency range, they handle any measurement, simply and precisely.

These instruments provide field analysis using an FFT computation in addition to measuring magnetic and electric fields. The innovative STD mode opens up further application areas. With this new mode the measurement results for magnetic and electric field strength are displayed as a "Percent of Standard," regardless of the signal shape. This mode enables fast and reliable measurement and evaluation of the typical fields where complex, non-sinusoidal signals are common, e.g., in industrial applications that use resistance welding. Resistance welding issues surface in the traditional 50/60 Hz systems as well as in the newer medium-frequency switching units.

BASIC OPERATION

Both the EFA-200 and the EFA-300 have built-in, isotropic, magnetic field probes. Optional external probes can be used to handle other applications. For example, an isotropic B-field probe with high sensitivity and a large (100 cm²) cross-sectional area is available for the standardized measurement of dissimilar magnetic fields.

For measurements in hard-to-reach places, a miniature 3 cm diameter B-field "sniffer" probe is available.

Model EFA-300 includes a cubic-shaped, isotropic, E-field module. This E-field module contains both the sensor and circuitry that allows it to be operated independent of the base unit. The base instrument, or a computer with the EFA-TS remote software, can be used to read results in real-time and control the functions of the module. In the data-logging mode, the E-field module can be operated independently. Stored data can be read and analyzed at a later date using a computer and the EFA-TS software. The major advantage of operating the E-field module remotely is that it greatly reduces the influence of the human body on the electric field you are trying to measure.

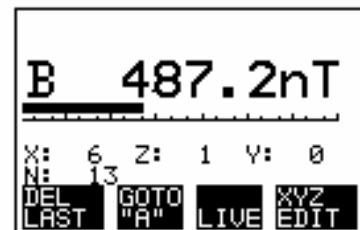


OPERATING MODES

Various standards and guidance take into account the fact that signal shape plays a major role in determining the workplace limit. For example, in Germany the employer's liability insurance association guideline on "Electromagnetic Fields" specifies different evaluation guidelines for different field shapes. Stationary sinusoidal and pulsed fields are differentiated. Occasionally both the RMS value and the peak value, (with proper phase) are critical for assessing exposure in the low-frequency range.

The aim of this new generation of equipment is to greatly simplify the measurement process. Besides measuring the RMS and peak values with the classic filter technique, both the EFA-200 and the EFA-300 include the highly innovative mode known as STD (Shaped Time Domain). With this new mode, both instruments achieve a new standard in simple but reliable measurement even in very complex environments. A standard's variation with frequency can be automatically taken into account and normalized. Field strength results are provided in a Percent of Standard". The user no longer needs any knowledge about the signal shape, frequency, or frequency-dependent limits.

For individual frequency and field strength analysis, a very fast FFT (Fast Fourier Transform) mode, which includes evaluation of harmonics, is available as an option.

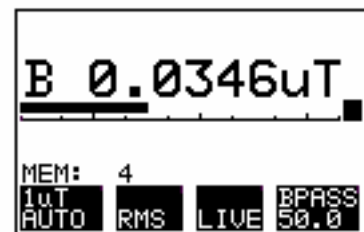


FIELD STRENGTH MODE

Selective and Broadband Field Strength Measurements

In many practical applications, such as proximity to high-voltage lines and transformer stations, this measurement is simple and produces accurate results. If the field under test has essentially a single frequency component, the broadband mode is the best choice. A broadband measurement of the magnetic field in the frequency range from 5 Hz to 32 kHz is made using the built-in isotropic probe. The Model EFA-300 can also be used to measure the electric field with the external, cube-shaped E-field module.

For more precise analysis or multi-frequency fields, band pass and band reject filters are available in the frequency range of 15 Hz to 2 kHz with user-editable filter lists. Operation is configured to allow fast switching between common settings, e.g., broadband and band pass filter.



In broadband mode, the large, backlit display provides measurement and frequency results simultaneously.

Two plug-in B-field probes extend the range of possibilities. The small "sniffer" probe has a 3 cm diameter while the larger, more sensitive probe, has a 100 cm² cross-sectional area.

Users can choose between RMS and peak value measurement from less than 1 nT to 31.6 mT. The EFA-300 can also measure the E-field from less than 1 V/m to 100 kV/m.



STD (Shaped Time Domain) EVALUATION MODE **Innovative Technique for Signal-Shape-Independent Field Measurements**

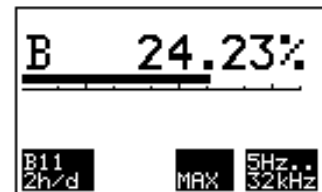
In many situations, detailed knowledge of the field, test equipment and other auxiliary conditions are necessary to obtain insight into the degree of exposure when using traditional measurement equipment. Standardized evaluation entails complicated analysis. However, the new and innovative "Shaped Time Domain" technique simplifies the process.

The frequency dependency of standards is automatically incorporated when using shaped frequency response measurements. Suitable detectors are provided for measuring the RMS and peak values. The analysis takes into account the phase of the individual components.

The B or E field is measured over the entire frequency range up to 32 kHz in real time and displayed as a percent of standard.

STD analysis is not limited to specific signal shapes. Signals with one or more frequencies and pulsed signals are no problem. Pulsed signal measurements are possible since the time-domain limits (e.g., those specified for selected pulsed signals) can be directly converted into frequency-domain limits. Proper evaluation in a personal safety context is achieved quickly and reliably using the STD technique.

To evaluate the field, six limit curves (standards) are stored in the device. A simple download procedure can be used to update the instrument to cover new standards.



SPECTRUM FFT MODE (Optional)

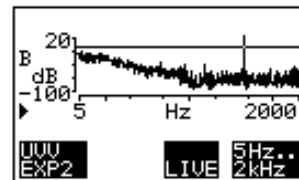
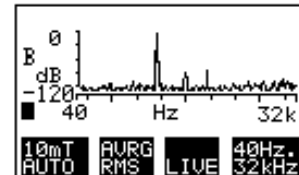
Spectrum analysis considerably simplifies the process of quickly evaluating multi-frequency signals up to 32 kHz. All spectral components are evaluated at once.

To provide a spectrum, the signal curve versus time is recorded via the probe and converted into the frequency domain using a mathematical procedure known as "Fast Fourier Transform".

The EFA-200 and the EFA-300 are so powerful that even transient events ranging up to 2 kHz can be analyzed in real time.

Evaluation is supported by graphics to clearly show the frequency spectrum and by cursor functions with frequency and level indications. The RMS and peak values of the nine most significant frequency components are easy to read.

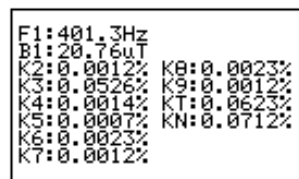
You can also use this mode to normalize the display to a given standard. The measured value is then displayed relative to its associated standard. In visual terms, the frequency-dependent standard becomes a straight line. This makes it easy to determine the relevancy of each spectral component.



HARMONIC ANALYSIS MODE (Included with Spectrum FFT Mode)

This mode enables fast, convenient evaluation of the harmonic spectrum. A table lists the field strengths of the measured fundamental frequency along with up to 8 harmonics.

This feature is very useful for a "hands-off" verification of power quality ("Quality of Service") in addition to occupational safety applications.



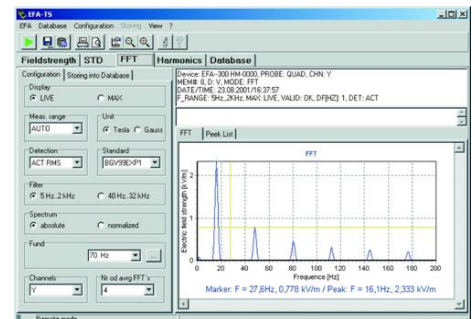
REMOTE AND DATA ANALYSIS SOFTWARE EFA-TS

This optional software is used to:

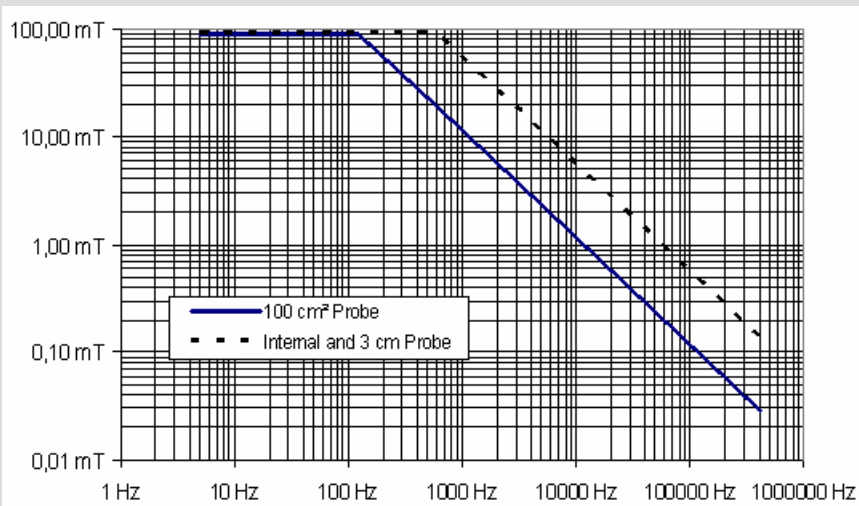
- Provide remote control of the field analyzer and data readout
- Download the data stored in the device
- Save acquired data on the computer
- Analyze the data and provide a graphic representation of the results to support the user in the preparation of measurement reports

Features

- Windows interface to configure the instrument and/or to control it remotely.
- Graphic representation of data stored in the internal memory of the instrument or in a file:
 - Line diagrams show field strength or Percent of Standard versus time. Can be used in real time.
 - Display of spectrum
 - Bar graph of harmonics
 - 2D-views with import possibility: background maps for Matrix-data sets
 - Graphic tools - zoom, marker, set-up for scale, color/thickness of lines, etc.
- Additional Analysis Functions:
 - Statistics - mean and maximum values, histogram, and number of values over a defined threshold
 - Peak list for spectrums
- Export Functions
 - Data sets as ASCII-files
 - Graphic screen into the clipboard



SPECIFICATIONS

		Magnetic (B-) Field (EFA-200 and EFA-300)			Electric (E-) Field (EFA-300 only)
		100 cm ² Probe	Internal Probe	3 cm Probe	
Sensor System		Coil (internal or external)			Plate Electrode
Measurement Axis, selectable		Tri- Axial (Isotropic) or Single Axis			
FIELD STRENGTH MODE					
Frequency Range	Broadband (+0/-3 dB), selectable	5 Hz to 2 kHz, 30 Hz to 2 kHz, 5 Hz to 32 kHz or 30 Hz to 32 kHz			
	Band Pass / Band Reject Filter, adjustable	15 Hz to 2 kHz (resolution 0.1 Hz)			
Detection, selectable		RMS (averaging time 1 sec.) Peak Value (proper phase)			
Measurement Range	Nominal	100 nT to 32 mT	100 nT to 32 mT	100 nT to 32 mT	10 V/m to 100 kV/m
	Damage Level (Peak)	91 mT ^a @ ≤125 Hz	91 mT ^a @ ≤625 Hz	91 mT ^a @ ≤625 Hz	280 kV/m
Damage Level (Peak)	Damage Level (Peak) ^a For magnetic field probes depending on frequency				
Noise level (RSM), typical	Broadband, 30 Hz to 2 kHz	4 nT	100 nT	20 nT	0.7 V/m
	Broadband, 5 Hz to 32 kHz	10 nT	200 nT	50 nT	4.5 V/m
	Band Pass Filter, 50 Hz to 400 Hz	0.8 nT	25 nT	5 nT	0.14 V/m
Uncertainty, typical ^b	Broadband, 5 Hz to 2 kHz	±3% @ ≥40 nT	±5% @ ≥1 μT	±4% @ ≥200 nT	±3% @ ≥5 V/m
	Broadband, 5 Hz to 32 kHz	±3% @ ≥80 nT	±8% @ ≥2 μT	±5% @ ≥400 nT	±3% @ ≥40 V/m
	Band Pass Filter, 50 Hz to 400 Hz	±3% @ ≥10 nT	±5% @ ≥250 nT	±4% @ ≥50 nT	±3% @ ≥1 V/m

^a The upper limit decreases linearly with increasing frequency above the mentioned frequency.

$$\text{Overload limit for 100 cm}^2 \text{ Probe} = \left(\frac{8000 \text{ mT} \cdot \text{Hz}}{\text{Frequency}} \right) \cdot \sqrt{2}$$

$$\text{Overload limit for 3 cm and internal Probe 100 cm}^2 \text{ Probe} = \left(\frac{40000 \text{ mT} \cdot \text{Hz}}{\text{Frequency}} \right) \cdot \sqrt{2}$$

^b Uncertainty includes all partial uncertainties (absolute, linearity, frequency response, and isotropy) as well as temperature and humidity related deviations. Signal sinusoidal, level >10% of selected measurement range; additional uncertainties apply with the steep frequency band limits.

	Magnetic (B-) Field (EFA-200 and EFA-300)			Electric (E-) Field (EFA-300 only)
	100 cm ² Probe	Internal Probe	3 cm Probe	
EXPOSURE STD MODE				
Frequency Range (+0/-3 dB)	5 Hz to 32 kHz			
Exposure Evaluation	Compared to Standards Stored in Meter ^c			
Measurement Range / Overload Limit	200%	200%	200%	200%
Noise Level, typical ^d (for ICNIRP Occupational)	<0.4%	<2%	<1%	<5%
Uncertainty, typical (percent of reading) ^b	±4%	±9%	±6%	±4%
SPECTRUM FFT / HARMONICS MODE (Optional)				
Frequency Range	5 Hz to 2kHz 40 Hz to 32 kHz			
Fundamental Range (HARMONICS only)	10 Hz to 400 Hz 10 Hz to 10 kHz (Option, FFT 5Hz-32kHz)			
Resolution by	2 kHz Range	0.01 Hz		
Marker:	32 kHz Range	0.1 Hz		
Frequency Scale, selectable:	2 kHz Range	Full-Scale Logarithmic or 100 Hz Wide Linear Span		
	32 kHz Range	Full-Scale Logarithmic or 1000 Hz Wide Linear Span		
Detection, selectable	RMS, RMS Average, Peak Value or Vector Peak Value (at each single frequency, proper phase)			
Measurement Range	See FIELD STRENGTH MODE			
Noise/ Spurious Level (RSM), typical	See Table 1 (on next page)			
Uncertainty, by marker ^b	See FIELD STRENGTH MODE			
Results Scale, selectable	20 dB to 120 dB (logarithmic)			
Data Acquisition, (start/stop)	2 kHz Range	Continuous and Overlapping / Seamless		
	32 kHz Range	Continuous		
Window Length:	2 kHz Range	1.0 second		
	32 kHz Range	0.1 second		
Result Averaging, selectable	2 kHz Range	1, 2, 4, or 8 seconds		
	32 kHz Range	4, 8, 16, or 32 Spectra		
Graphical Display, selectable (SPECTRUM FFT only)	Result: Absolute or Normalized to Reference Limit of Selected Standard; Marker Displays 9 Highest Peaks within Selected Frequency Range			
Result List, tabular (HARMONICS only)	Result of 2 nd to 9 ^m Harmonic ^e and Total Distortion (with/within noise), Referenced to the Level of Fundamental Frequency			
MEASUREMENT DATA MEMORY (individual in B- and E- Field unit)				
Capacity, typical (dependent on setting)	3600 Single Values or 22 Spectral Analyses			
Control:	Field Strength & Exposure STD Modes	Manual or Sequence Timer or Sequence Spatial-Assigned		
	Spectrum FFT & Harmonics Modes	Manual Only		

^b Uncertainty includes all partial uncertainties (absolute, linearity, frequency response, and isotropy) as well as temperature and humidity related deviations. Signal sinusoidal, level >10% of selected measurement range; additional uncertainties apply with the steep frequency band limits.

^c Stored standards can be updated by software: e.g. ICNIRP: occupational, general public; BGV B11: Exp. (2 h/d), Exp. 1, Exp. 2; VDE 0848: draft

^d Dependent on selected standard.

^e Limited by selected frequency range

GENERAL SPECIFICATIONS		
Display	LCD Dot Matrix 128x64 Pixel with Backlight	
Alarm, Adjustable Threshold	Acoustical, Optical	
Current Documentation (Specific Modes Only)	Input of Prevailing and Reference Current Value; Storage with Measurement Value of Field	N/A
Interface (Remote Control, Data Memory)	Optical, Serial (RS-232)	
Operating Temperature Range	0°C to +50°C	
Humidity	<95 % or <29 g/m ³ Occasional Brief Condensation Tolerable	
Operating Interval, typical	Continuous Measurement	10 Hours
	Programmed Sequence Time	24 Hours
Calibration Interval, recommended	24 Months	
Battery	NiMH Batteries (5x C-cell), exchangeable	NiMH Batteries, built in
Dimensions, approximate	110 x 200 x 60 mm	105 x 105 x 105 mm
Weight, approximate	1000 g	1000 g

TABLE 1: SPECTRUM FFT SENSITIVITY (Noise / Spurious)

	Magnetic (B-) Field (EFA-200 and EFA-300)			Electric (E-) Field (EFA-300 only)
	100 cm ² Probe	Internal Probe	3 cm Probe	
2 kHz Range	<45 nT @ ≤48 Hz	<400 nT @ ≤48 Hz	<260 nT @ ≤48 Hz	<0.3 V/m @ ≤48 Hz
	<4 nT @ >48 Hz	42 nT @ >48 Hz	<23 nT @ >48 Hz	<0.1 V/m @ >48 Hz
	< 0.05 nT @ noise floor	<2 nT @ noise floor	< 0.2 nT @ noise floor	<0.02 V/m @ noise floor
32 kHz Range	<2 nT @ <200 Hz	<22 nT @ <200 Hz	<10 nT @ <200 Hz	
	<0.3 nT @ 200 Hz to 20kHz	<11 nT @ 200 Hz to 20 kHz	<2 nT @ 200 Hz to 20 kHz	<0.1 V/m @ ≤20 kHz
	<0.6 nT @ >20 kHz	<11nT @ >20 kHz	<3 nT @ >20 kHz	<3 V/m @ >20 kHz
	<0.07 nT @ noise floor	<1.5 nT @ noise floor	<0.3 nT @ noise floor	<0.05 V/m @ noise floor

ORDERING INFORMATION

EFA-200 Magnetic Field Analyzer	Part number
<ul style="list-style-type: none"> - Basic Unit (EFA-200, Magnetic Field Analyzer, 5 Hz-32kHz), Calibrated - Mode: FIELD STRENGTH, EXPOSURE STD, HARMONIC ANALYSIS - Soft case for EFA-200 - O/E Converter ORSD-9 Universal - Cable, Fiber Optic Duplex (1000µm), 2m - Software, EFA-200/-300 Tools - Power Supply 9VDC, 100V-240VAC, all Plugs - Operating Manual EFA-200/-300, English or German 	<p>2245/20</p> <p><i>Please specify Manual: English or German</i></p>
SET	
EFA-200, Magnetic Field Analyzer, Including Option FFT 32kHz	2245/20/FFT-32
EFA-300 Electric and Magnetic Field Analyzer	Part number
<ul style="list-style-type: none"> - Basic Unit (EFA-300, EM Field Analyzer System, 5 Hz-32kHz), Calibrated - Mode: FIELD STRENGTH, EXPOSURE STD, HARMONIC ANALYSIS - Hard case for EFA-300 - O/E Converter ORSD-9 Universal - Cable, Fiber Optic Duplex (1000µm), 2m - Software, EFA-200/-300 Tools - Power Supply 9VDC, 100V-240VAC, all Plugs - Operating Manual EFA-200/-300, English or German 	<p>2245/301</p> <p><i>Please specify Manual: English or German</i></p>
Probe, Electric Field for EFA-300	
<ul style="list-style-type: none"> - E-Field-Probe 5 Hz-32 kHz for EFA-300, Calibrated - Power Supply 9VDC, 100V-240VAC, all Plugs - Cable, Fiber Optic Duplex (1000µm), 10m - Tripod, Non-Conductive, 1.65m with Carrying Bag 	2245/302
SET	
EFA-300, EM Field Analyzer Set (2245/301 with Electrical Field Probe 2245/302)	2245/30
EFA-300, EM Field Analyzer Set (with Electrical Field Probe) and Option FFT 32 kHz	2245/30/FFT-32
EFA 300 with Option FFT 32 kHz	2245/301/FFT32
Probe, Electric Field for EFA-300 with Option FFT 32 kHz	2245/302/FFT32

EFA-200/300 Electric and Magnetic Field Analyzer	Part number
OPTIONS	
Option, FFT 5Hz-32kHz - Please provide S/N of EFA-200 or EFA-300 and Probe	2245/95.15
Option, FFT 2kHz-32kHz - Please provide S/N of EFA-200 or EFA-300 and Probe, only with Option, FFT 5Hz-2kHz	2245/95.19
OPTIONAL PROBES	
Probe, B-Field, A=100cm ²	2245/90.10
Probe, B-Field, D=30mm	2245/90.20
PC SOFTWARE	
Software, EFA-TS, Remote and Data Analysis Software	2245/93.56
ACCESSORIES	
Cable, Probe Extension 1.25m	2244/90.35
Tripod, Non-Conductive, 1.65m with Carrying Bag	2244/90.31
Tripod Extension, 0.50m, Non-Conductive	2244/90.45
Cable, Fiber Optic Duplex F-SMA,	10 m 2260/90.42
	30 m 2260/90.44
	50 m 2260/90.46
	100 m 2260/90.48
Cable, Adapter USB 2.0 - RS232, 0.8m	2260/90.53

Narda Safety Test Solutions GmbH
 Sandwiesenstrasse 7
 72793 Pfullingen, Germany
 Phone: +49 (0) 7121-97 32-777
 Fax: +49 (0) 7121-97 32-790
 E-Mail: support@narda-sts.de
 www.narda-sts.de

Narda Safety Test Solutions
 435 Moreland Road
 Hauppauge, NY 11788, USA
 Phone: +1 631 231-1700
 Fax: +1 631 231-1711
 E-Mail: NardaSTS@L-3COM.com
 www.narda-sts.com

Narda Safety Test Solutions Srl
 Via Leonardo da Vinci, 21/23
 20090 Segrate (Milano) - ITALY
 Tel.: +39 02 26952421
 Fax: +39 02 26952406
 Email: support@narda-sts.it
 www.narda-sts.it